

TOTALPAD

TRANSFORMER SUBSTATION

COMPLETE SUBSTATION PACKAGE CONSISTING OF A TRANSFORMER, MV AND OPTIONAL LV SWITCHGEAR

ETEL



KEY FEATURES

- Flexible design options
- Single footprint, complete, ready to install solution
- Able to accommodate various medium voltage and low voltage switchgear options
- Hermetically sealed for long life and minimum oil maintenance
- High quality/low cost

OPTIONAL FEATURES

- Full automation options
- Oil/winding temperature indication
- Fused protection
- Fault passage indicators
- Voltage indication
- Circuit breakers
- Current monitoring
- Remote indication for protection devices
- Standard transformer oil or biodegradable fluid options available

TECHNICAL SPECIFICATIONS

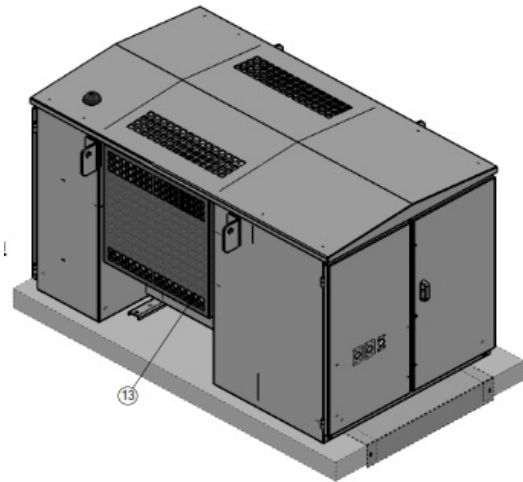
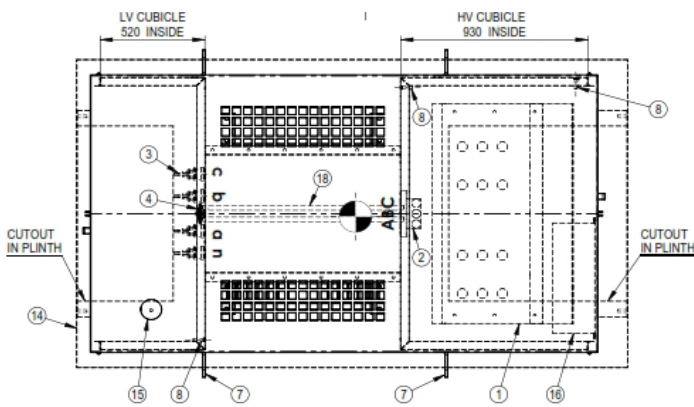
Standard	Designed, manufactured and tested to AS/NZS60076 and/or IEC60076
KVA sizes	100kVA – 1500kVA
HV Volts	6.6kV, 11kV, 22kV, 33kV
LV Volts	415 - 240 Dyn 11 (as standard, others available)
HV tappings	+2.5% to -7.5% in 2.5% steps
BIL/Power Frequency Levels	60kVpeak / 20kVrms 95kVpeak / 28kVrms 150kVpeak / 50kVrms 170kVpeak / 70kVrms
Oil	IEC60296:2012 or equivalent
Coating systems	Fully customised protective coating systems to AS2312:2014

TOTALPAD

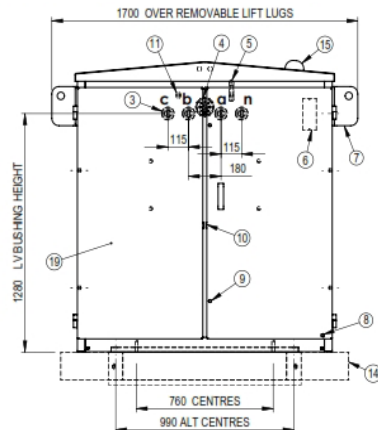
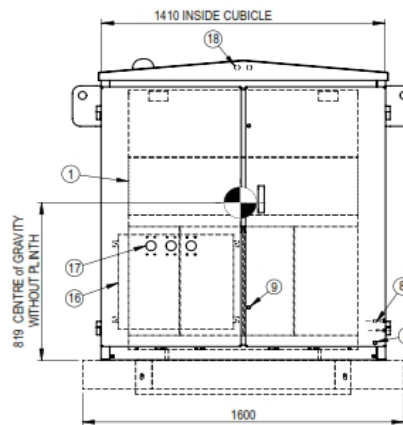
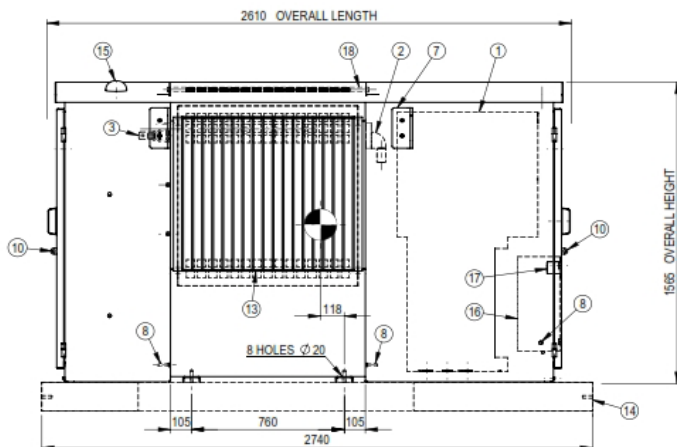
TOTALPAD

TRANSFORMER SUBSTATION

COMPLETE SUBSTATION PACKAGE CONSISTING OF A TRANSFORMER, MV AND OPTIONAL LV SWITCHGEAR



NOTE:
CENTRE OF GRAVITY POSITION IS WITHOUT CONCRETE PLINTH



- 1 Medium voltage switchgear
- 2 HV bushings
- 3 LV bushings
- 4 Tapswitch handle
- 5 Oil level sight glass
- 6 Rating plate
- 7 Lifting lug (removable)
- 8 Earth stud
- 9 Door
- 10 Padlocked hinged access door
- 11 Thermometer pocket
- 13 Finwall and radiator cover
- 14 Concrete plinth (optional)
- 15 Aerial hole
- 16 Control box (optional)
- 17 LED (optional)
- 19 Low voltage switchgear

ETEL LIMITED

ETEL Limited is New Zealand's largest transformer manufacturing company, specialising in the design and manufacture of distribution transformers.

With a six plant manufacturing facility in Auckland, operational facilities in Melbourne and Perth, and a manufacturing plant in Jakarta, ETEL is able to produce a full range of distribution transformers, from a capacity of 15kVA up to 4.5MVA in size, for electricity supply networks, industrial sites and mining projects.

ETEL has in place a complete quality system, which complies with and is certified to ISO9001:2015 and an occupational health and safety management system which is certified to ISO14005.

ETEL are committed to the innovation of distribution transformers designed to meet the individual requirements and vision of its customers.



Quality
ISO 9001



Health &
Safety
ISO 45001

ETEL LIMITED – HEAD OFFICE

550 Rosebank Road, Auckland, New Zealand

p: +64 9 820 6110 | e: sales@eteltransformers.co.nz | www.eteltransformers.co.nz

OFFICES: MELBOURNE | PERTH | JAKARTA

As we are continuously working to improve our products and designs, the content in this publication is subject to change without notice. Please contact us if you have any questions or to access the latest information.
© ETEL 2020